

MOUTH MIRRORS

Plain



DE-600 Fig. 3 Ø20mm
DE-601 Fig. 4 Ø22mm
DE-602 Fig. 5 Ø24mm
DE-603 Fig. 6 Ø26mm



Cone-Socket Plain



DE-604 Fig. 3 Ø20mm
DE-605 Fig. 4 Ø22mm
DE-606 Fig. 5 Ø24mm

Magnifying



DE-607 Fig. 3 Ø20 mm
DE-608 Fig. 4 Ø22 mm
DE-609 Fig. 5 Ø24 mm



Cone-Socket Magnifying



DE-610 Fig. 3 Ø20mm
DE-611 Fig. 4 Ø22mm
DE-612 Fig. 5 Ø24mm

Rhodium



DE-613 Fig. 3 Ø20mm
DE-614 Fig. 4 Ø22mm
DE-615 Fig. 5 Ø24 mm



Cone-Socket Rhodium



DE-616 Fig. 3 Ø20mm
DE-617 Fig. 4 Ø22mm
DE-618 Fig. 5 Ø24mm

Front Surface



DE-619 Fig. 3 Ø20mm
DE-620 Fig. 4 Ø22mm
DE-621 Fig. 5 Ø24mm
DE-622 Fig. 6 Ø26mm



Cone-Socket Front Surface



DE-623 Fig. 3 Ø20mm
DE-624 Fig. 4 Ø22mm
DE-625 Fig. 5 Ø24mm

HANDLES FOR MOUTH MIRRORS



DE-626
Hollow Mirror
Handle Round
Ø 10 mm



DE-627
Hollow Mirror
Hexagonal
Handle
Ø 8 mm



DE-628
Hollow
Ø 8 mm



DE-629
Hollow Mirror
Hexagonal
Handle
Ø 10 mm



DE-630
Hollow Mirror
Handle
Ø 8 mm



DE-631
Hollow Mirror
Handle
Ø 10 mm



DE-632
Mirror Handle
Solid
Ø 6 mm



DE-633
Mirror Handle
Solid
Ø 6 mm



DE-634
Mirror Handle
Solid Octagonal
Ø 6 mm



DE-635
Mirror Handle
Stem
with Rule
35mm



DE-636
Mirror Handle
Solid
Stem with
Rule 35mm



DE-637
Cone-Socket
Solid Octagonal
Ø 6 mm



DE-638
Cone-socket
Solid
Ø 6 mm



DE-639
Cone-socket
Hexagonal
Handle
Ø 6 mm

Cone-Socket Mirror Handle

<http://www.suskan.com>

EXPLORERS

Examination kit Set of 3 Pieces



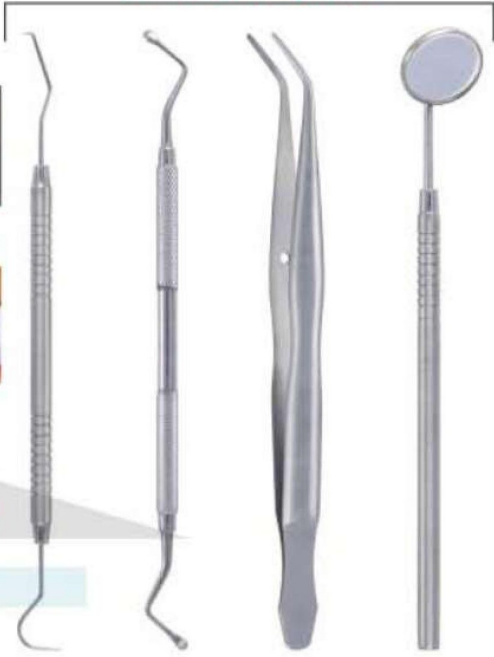
DE-640
Probe

DE-641
Mirror

DE-642
College Forcep
15cm



Examination Set of 4 Pieces



DE-643
Exp,23/17-A

DE-644
Exavators

DE-645
Tweezers

DE-646
Mouth Mirror

DE-647

First Aid Examination Set of 3 Pieces



DE-648

First Aid Examination Set of 3 Pieces



DE-649

First Aid Examination Set of 3 Pieces



DE-650

First Aid Examination Set of 3 Pieces



TWEEZERS



DE-651
Surgical
11.5cm



DE-652
London College
15cm



DE-653
Semken Taylor
Str.



DE-654
Semken Taylor
Cvd.



DE-655
Meriam
16cm



DE-656
Dressing
14cm



DE-657
Semken Taylor
1x2 Straight



DE-658
Semken Taylor
1x2 Curved



DE-659
Gilles
15cm 1x2



DE-660
14cm 1x2



DE-661
Perry
13cm



DE-662
Atraumatic
15cm Cvd



DE-663
Atraumatic
15cm Str.



DE-664
College with Lock
15cm Cvd.



DE-665
Gerald
17.5cm



DE-666
with lock
15cm



DE-667
Atraumatic
17.5cm

TWEEZERS



DE-668
Adson-TC
12cm



DE-669
Adson-TC
12cm 1x2



DE-670
Adson-TC
15cm 1x2



DE-671
Adson
12cm



DE-672
Adson
12cm 1x2



DE-673
Adson
15cm 1x2



DE-674
Adson Brown
12cm



DE-675
Crane Kapla
15cm



DE-676
Crane Kaplan
15cm



DE-677
Crane Kaplan
15cm



DE-678
Hemingway
15cm



DE-679
Miller
15cm Str.



DE-680
Miller
15cm Cvd.



DE-681
Dressing
Tweezer
14.5cm



DE-682
College
Curved
Tip 15cm



DE-683
Maryam
Tweezers
15cm



DE-684
College
Tweezer
15cm



DE-685
Perry
Tweezer
12.5cm



DE-686
Self-locking
Tweezer
15cm

EXPLORERS

Single Ended Probe Solid Handle 4.5mm Length 150mm



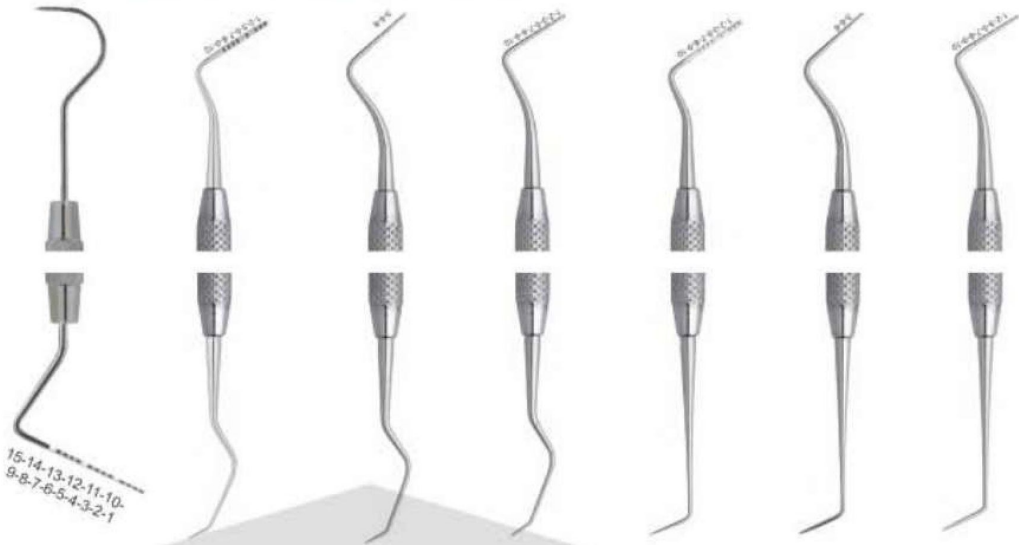
Explorers-Single-End

Double-Ended Explorers



EXPLORERS

Probes Double Ended 6mm, length 170mm



DE-711
23/UNC1
university of north carolina Explorer

DE-712
Goldman Fox
Fig.17

DE-713
University
of Michigan
Fig.17

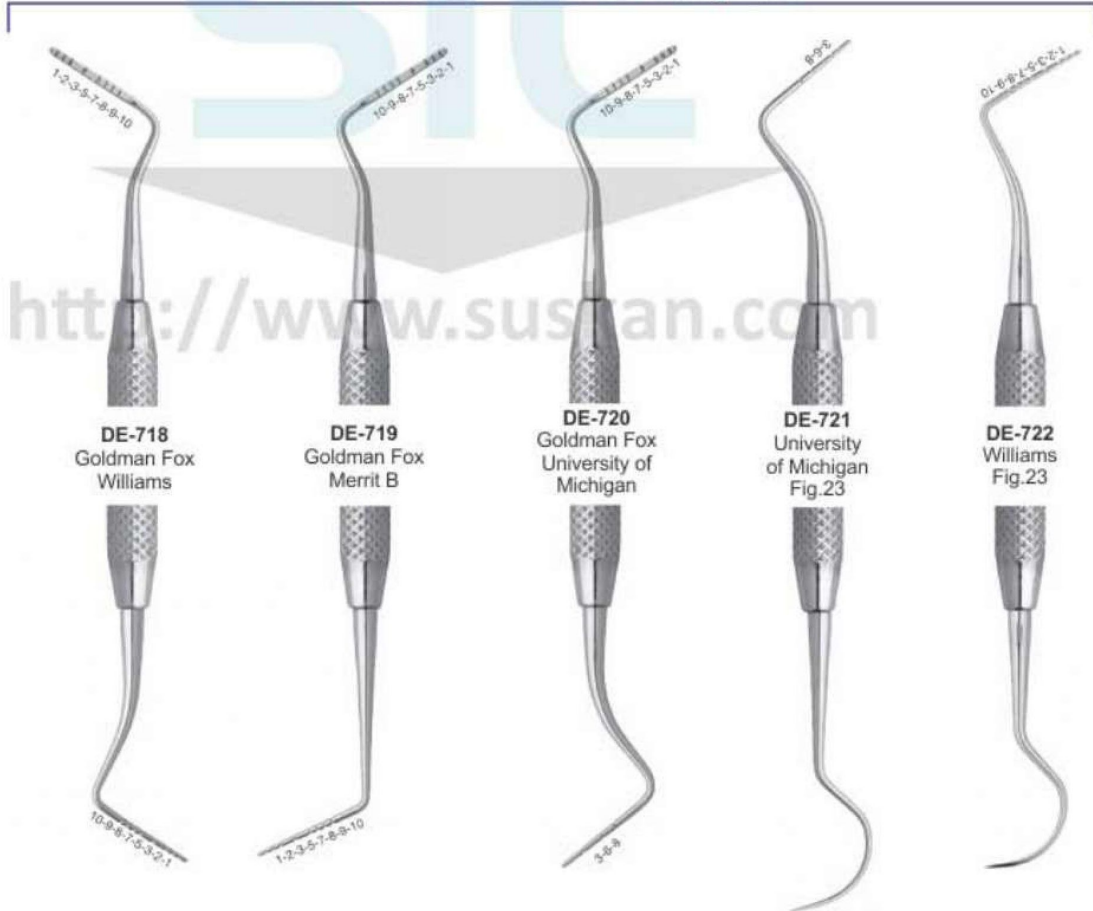
DE-714
Williams
Fig.17

DE-715
Goldman Fox
Fig.16

DE-716
University
of Michigan
Fig.16

DE-717
Williams
Fig.16

Pointed Probes Double Ended Handle 6mm, length 170mm



DE-718
Goldman Fox
Williams

DE-719
Goldman Fox
Merrit B

DE-720
Goldman Fox
University
of Michigan

DE-721
University
of Michigan
Fig.23

DE-722
Williams
Fig.23



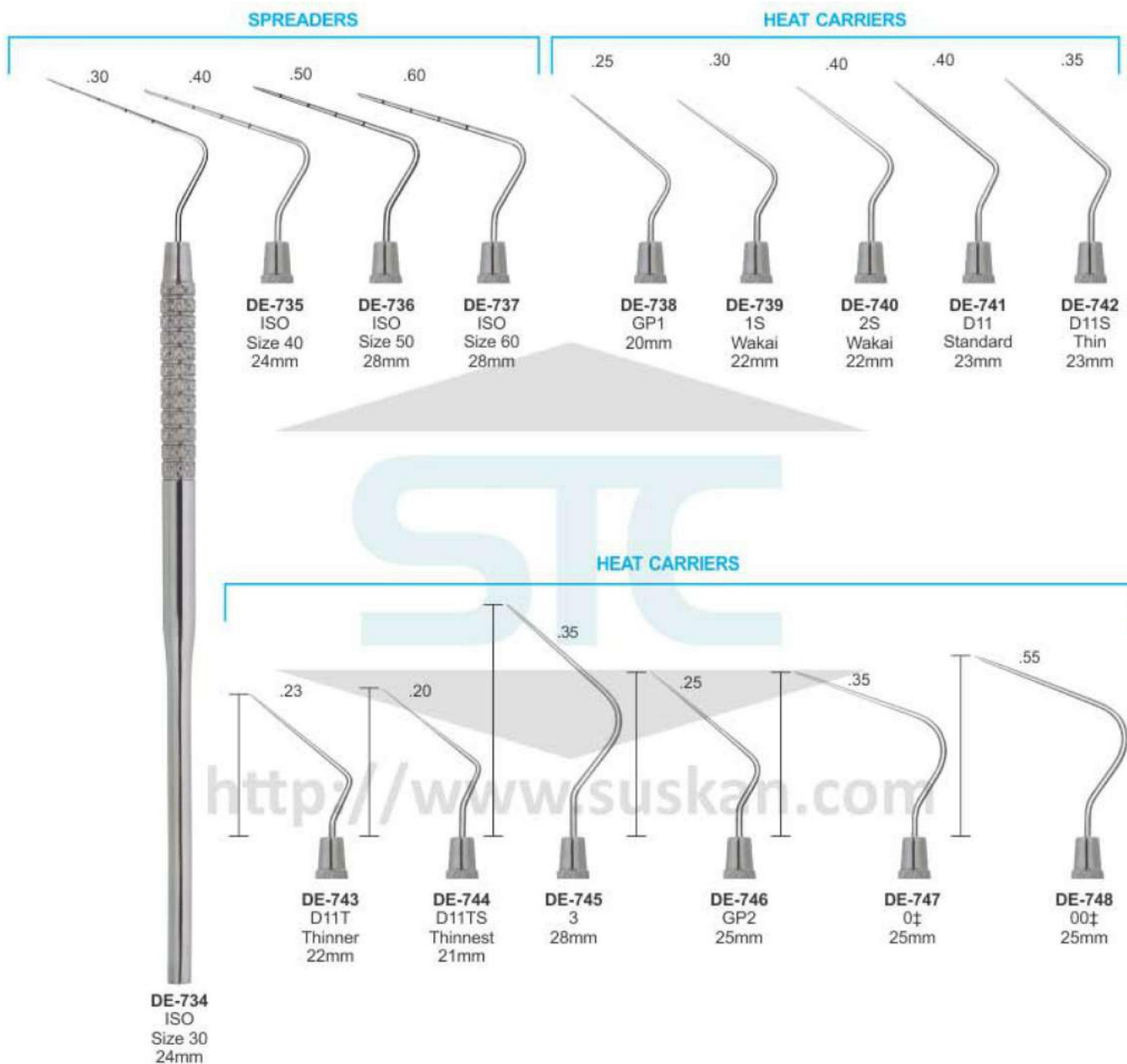
DE-710
Williams

EXPLORERS

**EXPLORERS INSTRUMENTS SOLID HANDLE 6MM, LENGTH 170MM
PLUGGERS**



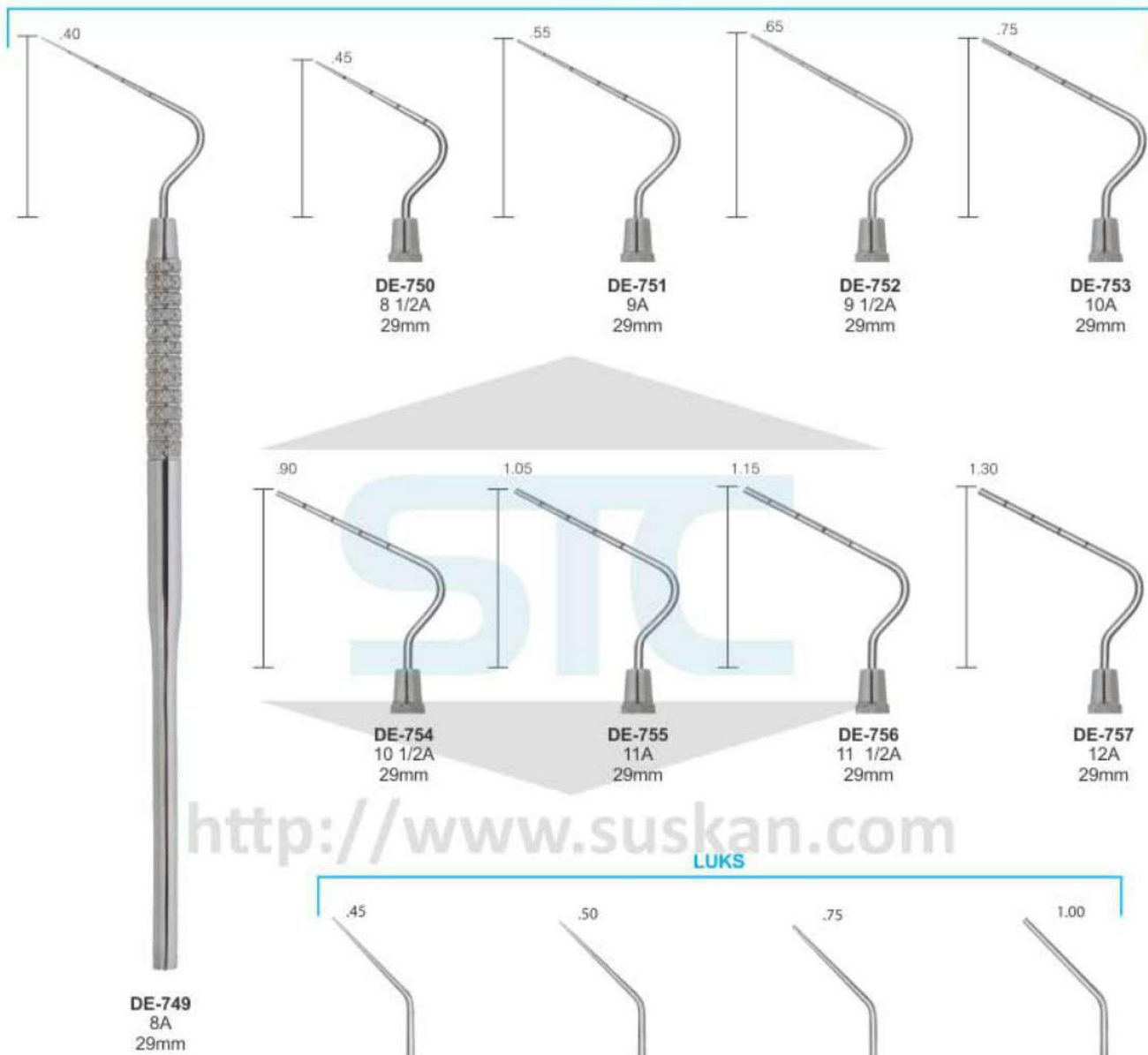
PERIODONTAL PROBES



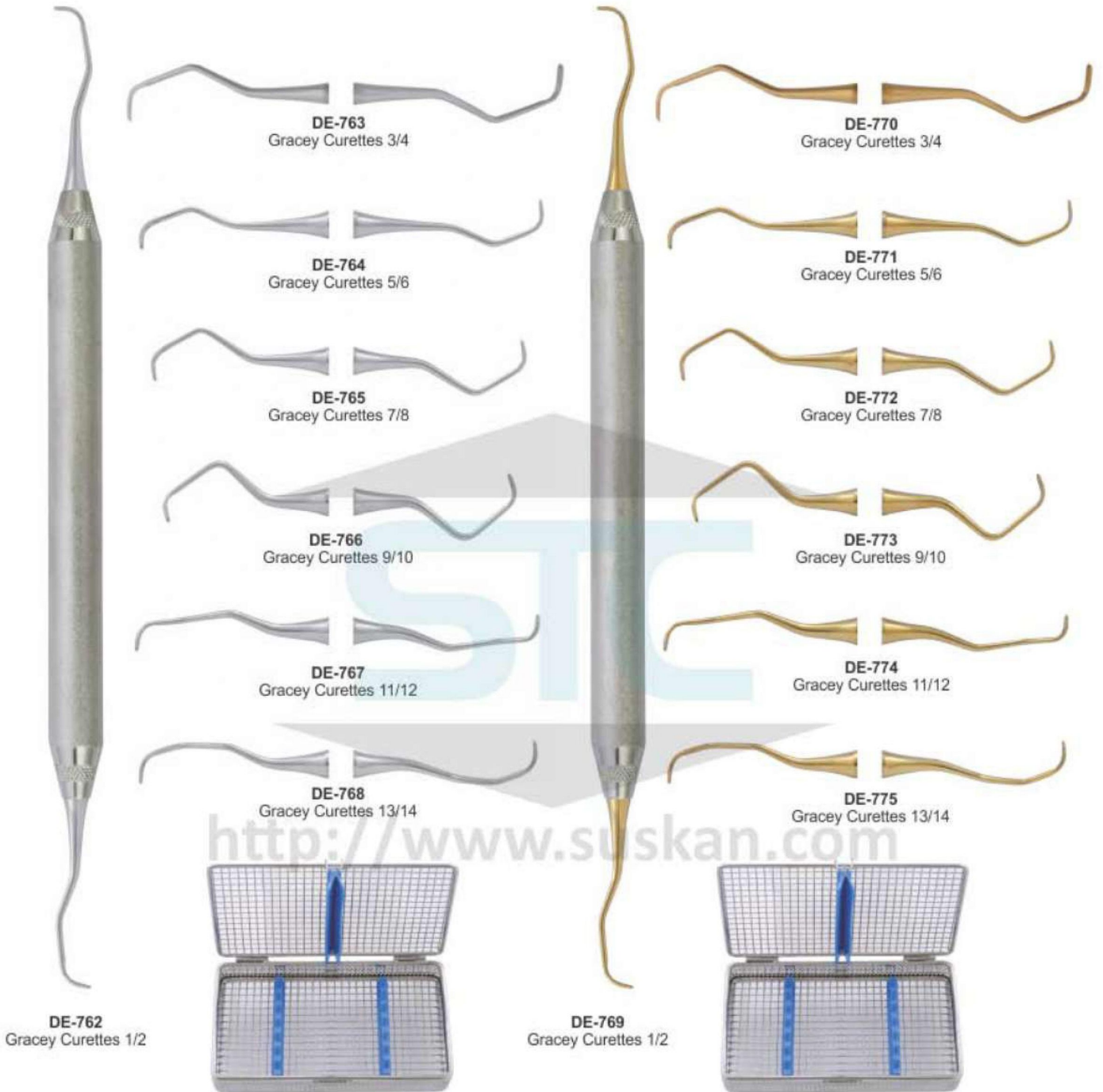
PERIODONTAL PROBES

ENDODONTICS INSTRUMENTS

ANTERIOR



SCALER



SCALER

GRACEY MINI FIVE

Hollow Handle 9.5mm, Length 170mm Ceramic Coated Handle

GRACEY AFTER FIVE

Hollow Handle 9.5mm, Length 170mm Ceramic Coated Handle



DE-777
Fig. 3/4 Gracey 3M



DE-783
Gracey 3/4 AF



DE-778
Fig. 5/6 Gracey 3M



DE-784
Gracey 5/6 AF



DE-779
Fig. 7/8 Gracey 3M
Buccal and lingual/
Palatal surfaces



DE-785
Gracey 7/8 AF



DE-780
Fig. 11/12 Gracey 3M
Mesial



DE-786
Gracey 11/12 AF



DE-781
Fig. 13/14 Gracey 3M
Distal



DE-787
Gracey 13/14 AF

<http://www.suskan.com>

DE-776
Fig. 1/2
Gracey 3m

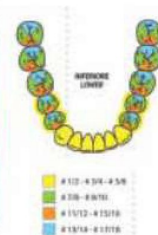
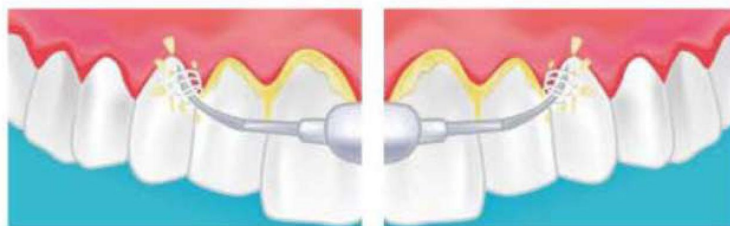
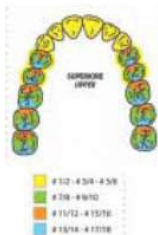


DE-782
Gracey
1/2 AF



SCALER

Gracey Curettes



SCALER

Sickle Scalars



DE-797 Fig. U15/33 - Towner-Jaquette



DE-798 Fig. U15/30 - Towner-Jaquette



DE-799 Fig. H5/33



DE-800 Fig. H6/H7



DE-801 Fig. 30/33 - Jaquette



DE-802 Fig. T2/T3 - Taylor



DE-803 Fig. 204



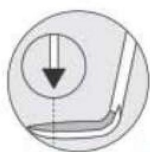
DE-804 Fig. 204S



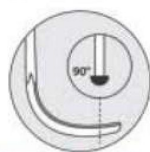
DE-805 Fig. 11/12 - MC - McCall
Mesial



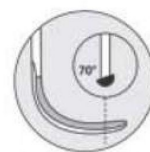
DE-806 Fig. 13/14 - MC - McCall
Distal



Straight and curved sickle scalars
Feature: 2 cutting edges curved facial component tipped ends



Universal curettes
are characterized by an angle of 90° between the terminal stem and the cutting component.



Gracey curettes
are characterized by an angle of 70° between the terminal stem and the cutting component.

SCALER

Universal Curettes



DE-807 Fig. 13S/14S - MC - McCall



DE-808 Fig. 17S/18S - MC - McCall
Distal



DE-809 Fig. M23



DE-810 Fig. 204SD



DE-811 Fig. YG7/8-Younger Good



DE-812 Fig. L 1/2 - Langer



DE-813 Fig. L 3/4 - Langer



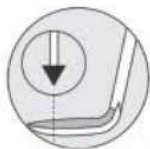
DE-814 Fig. L 5/6 - Langer



DE-815 Fig. M 23A



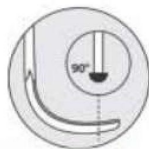
DE-816 Fig. M 23B



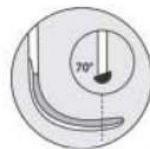
Straight and curved sickle scalers
Feature: 2 cutting edges curved facial component tipped ends



Universal curettes
are characterized by an angle of 90° between the terminal stem and the cutting component.



Gracey curettes
are characterized by an angle of 70° between the terminal stem and the cutting component.



SCALER

Periodontal knives



SCALER



DE-825
17



DE-826
17D



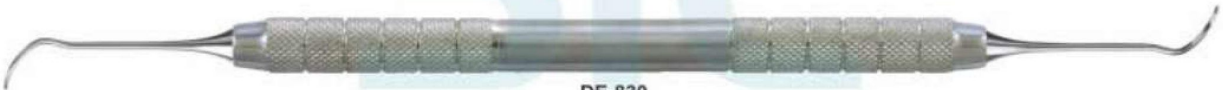
DE-827
54A
Mühlemann



DE-828
67



DE-829
37D



DE-830
8
Wiland



DE-831
8
Holz

0.9 mm



DE-832
9
Holz

0.7 mm

Chisels
Diamond coated margin trimmers



DE-833
40P



DE-834
40A

Thanks to the diamond-coated hand instruments the margins are evenly levelled.

SCALER

Margin trimmers



DE-835
1TH2 Hirt



DE-836
5TH6 Hirt



DE-837
3TH4 Hirt



DE-838
7TH8 Hirt



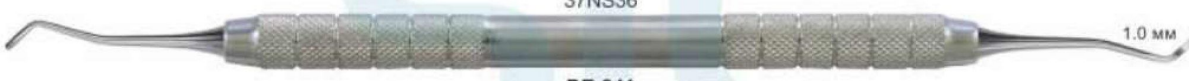
DE-839
62NS61

2.0 MM



DE-840
37NS36

1.5 MM



DE-841
66NS65

1.0 MM



DE-842
79CI180 Black



DE-843
77CI178 Black



DE-844
279CI280 Black



DE-845
277CI278 Black



DE-846
179CI180 Black



DE-847
177CI178 Black

SCALER

CHISELS



DE-848
1/2 Werdelstaedt



DE-849
3/4 Werdelstaedt



DE-850
7 Straight



DE-851
5/6 Straight



DE-852
7/10 Straight



DE-853
8/9 Binangle



DE-854
11/12 Binangle



DE-855
40/41 Binangle

<http://www.suskan.com>
Tartar Remover Instruments Solid Handle Ø 6 mm



DE-856
Fig. 1



DE-857
Fig. 1L
Left



DE-858
Fig. 1R
Right



DE-859
Fig. 2L
left



DE-860
Fig. 2R
Right



DE-861



DE-862



DE-863

BURNISHERS CONSERVATIVE TREATMENT



DE-864
WHITE 28



DE-865
WHITE 29



DE-866
WHITE 31



DE-867
WHITE 32



DE-868
WHITE 33



DE-869
WHITE 34



DE-870
WESTCOTT 21



DE-871
WESTCOTT 21B



DE-872



DE-873



DE-874
WHITE



DE-875
WHITE

FILLING INSTRUMENTS CONSERVATIVE TREATMENT



DE-876



DE-877



DE-878



DE-879



DE-880



DE-881



DE-882



DE-883



DE-884

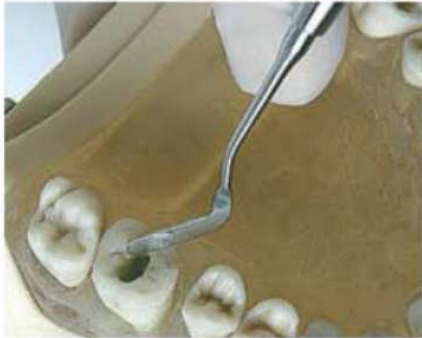
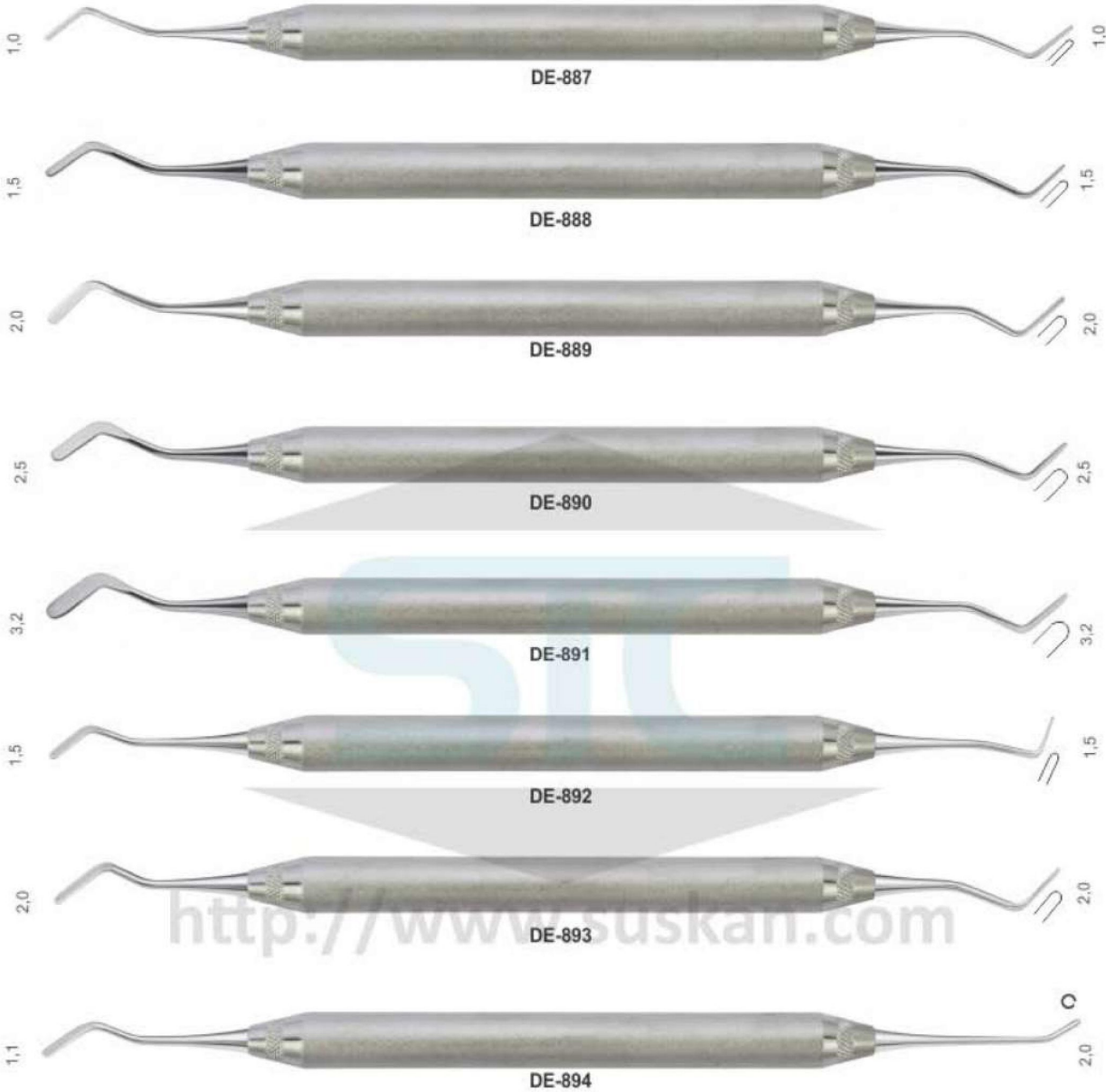


DE-885
PLANATOR



DE-886
PLANATOR

FILLING INSTRUMENTS CONSERVATIVE TREATMENT



BURNISHERS CONSERVATIVE TREATMENT

Ball Burnishers

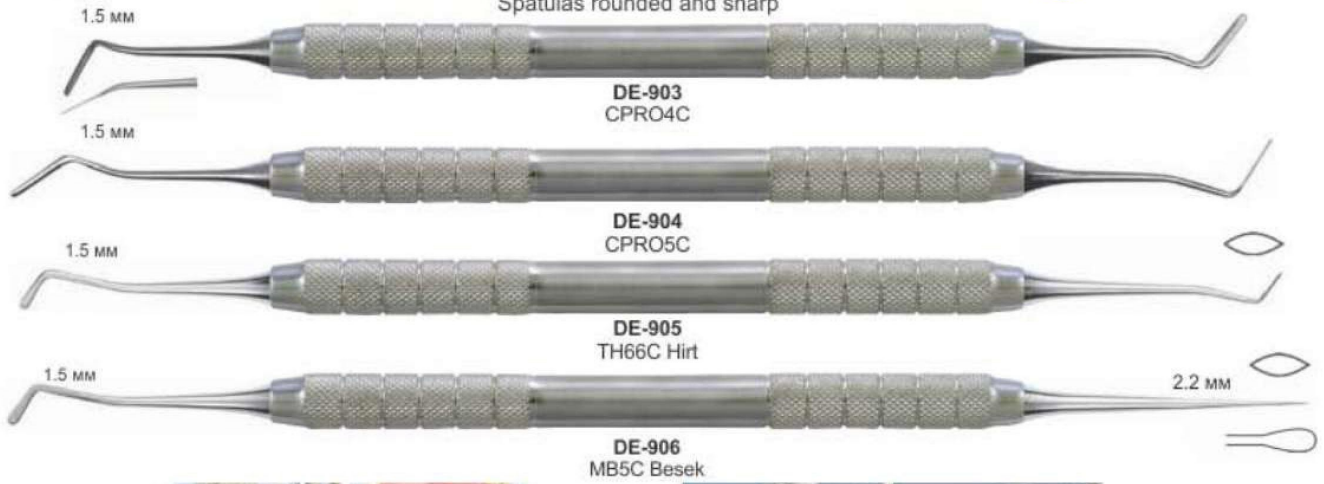


Hatches



COMPOSITE INSTRUMENTS

Spatulas rounded and sharp

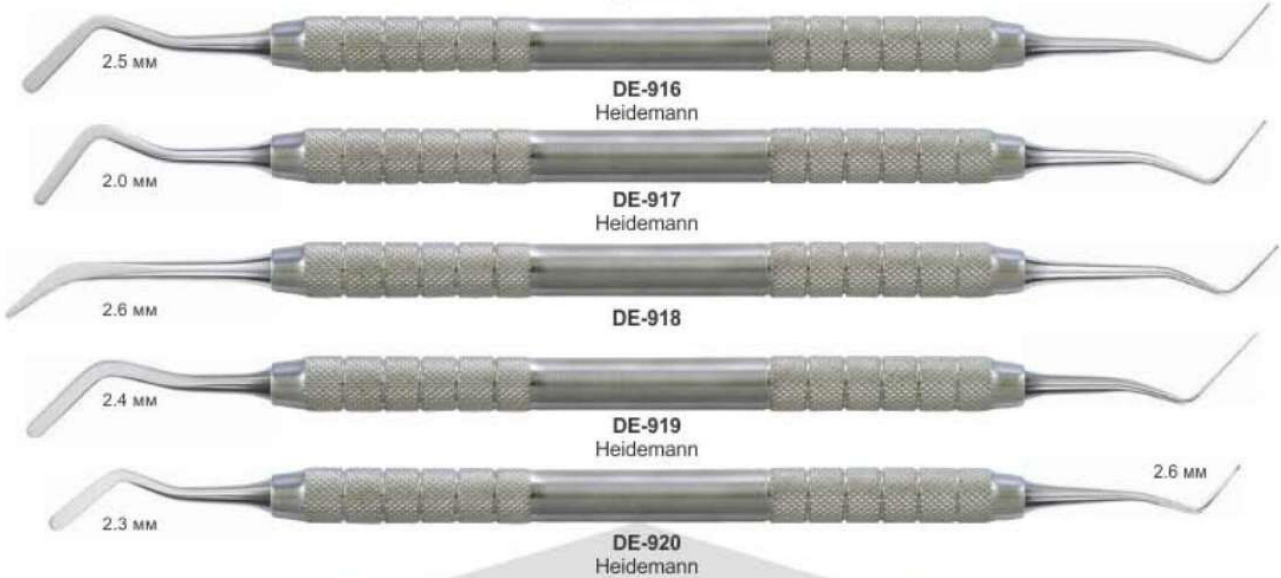


Spatulas Blade Thickness 0.22 MM



COMPOSITE INSTRUMENTS

Spatulas

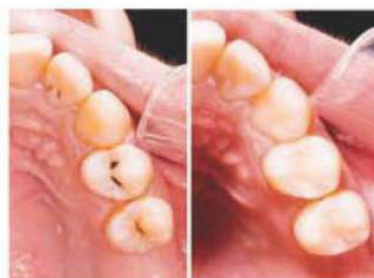


Spatulas-Pluggers

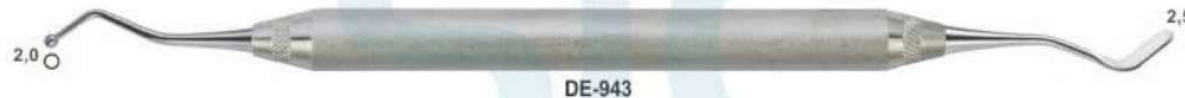


EXCAVATOR INSTRUMENTS

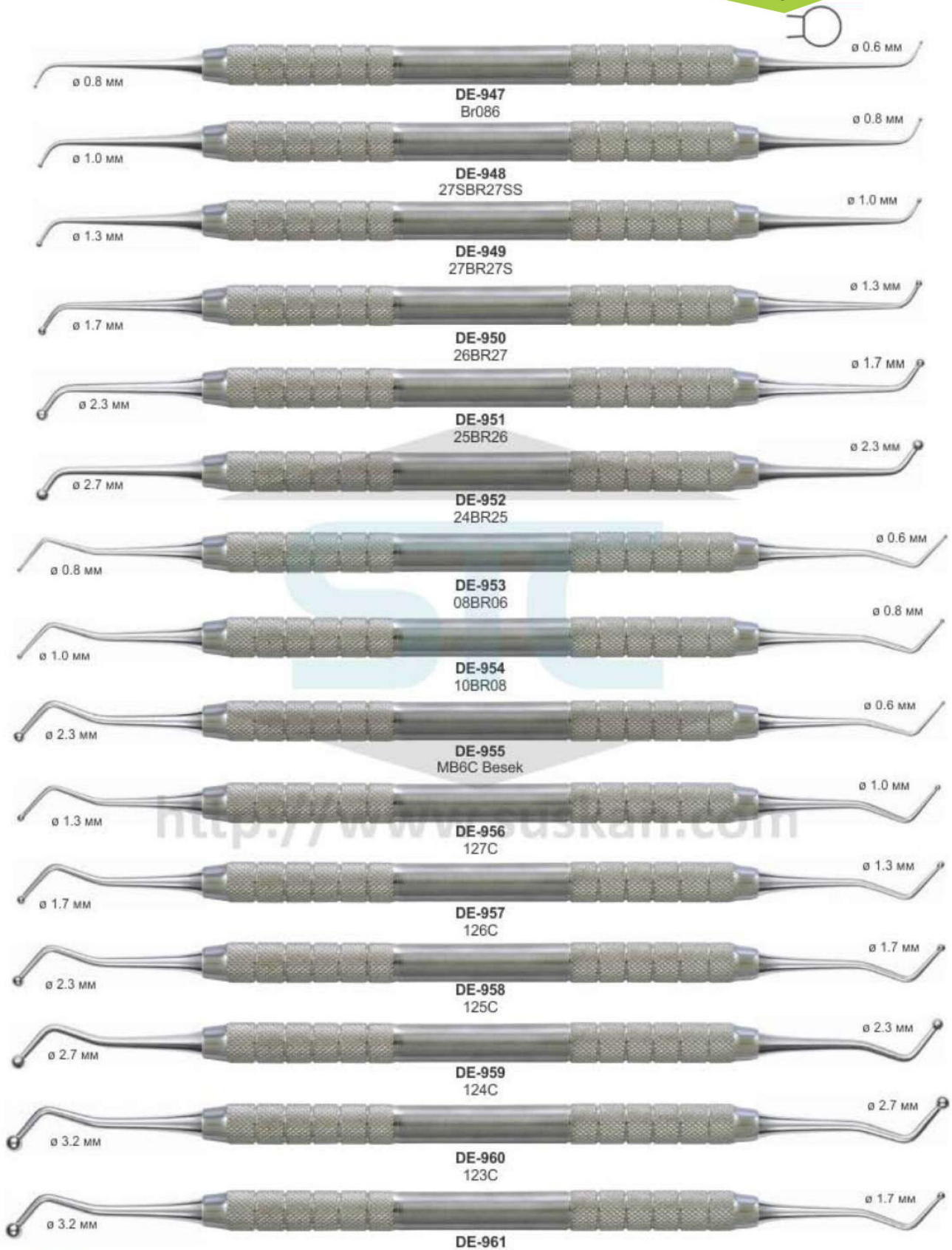
Water drop Our excavators have particularly sharp blades, free of burrs and perfectly rounded.



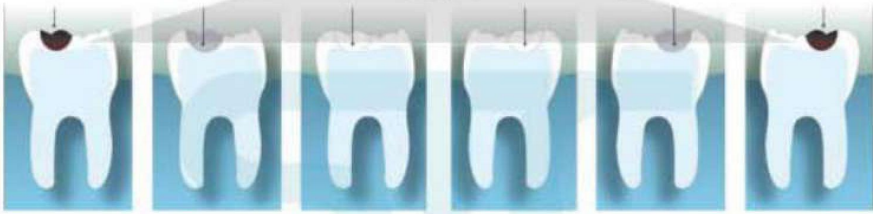
FILLING INSTRUMENTS CONSERVATIVE TREATMENT



COMPOSITE BALL PLUGGERS

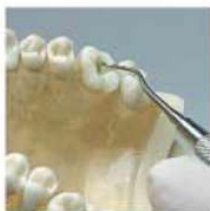
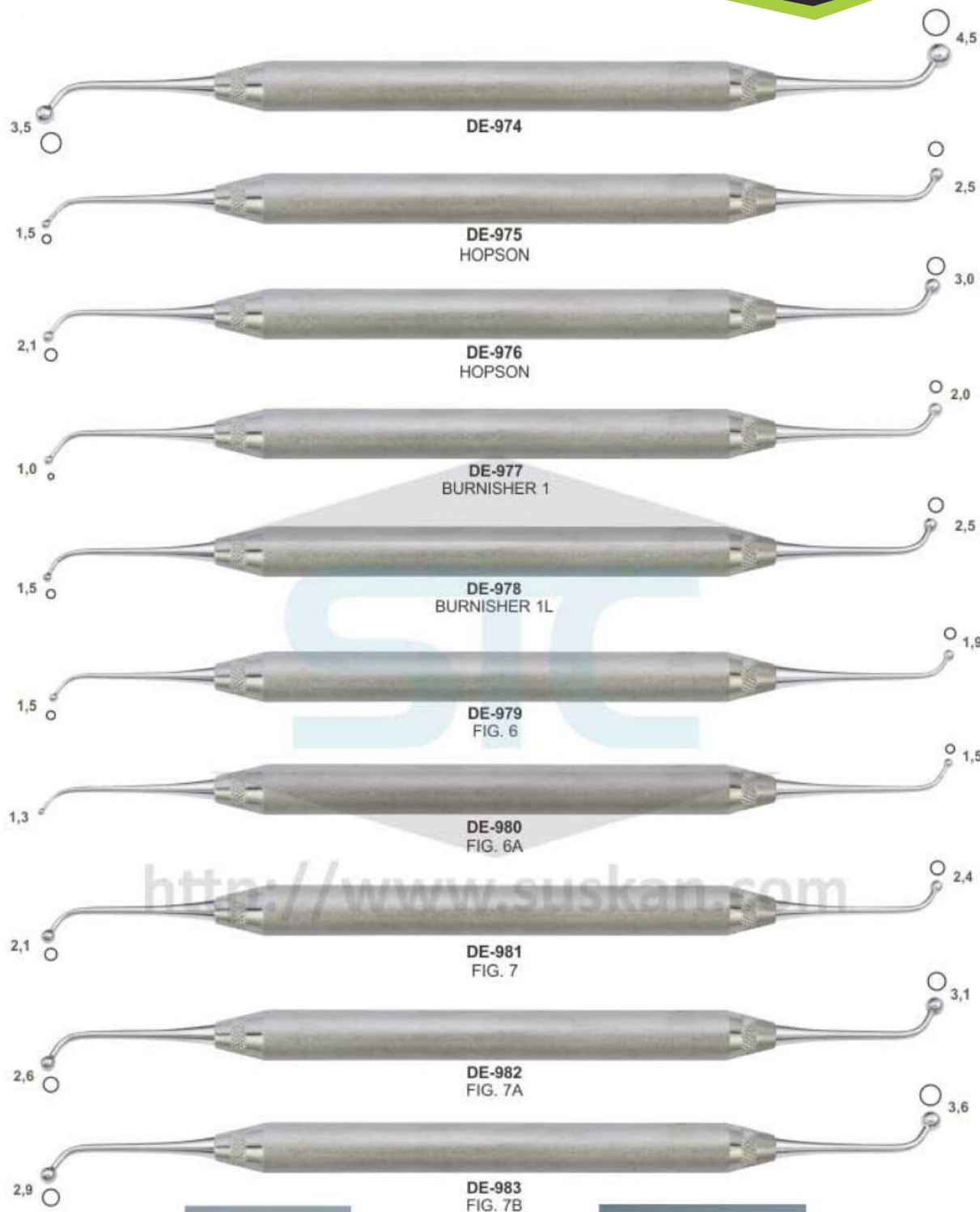


FILLING INSTRUMENTS CONSERVATIVE TREATMENT

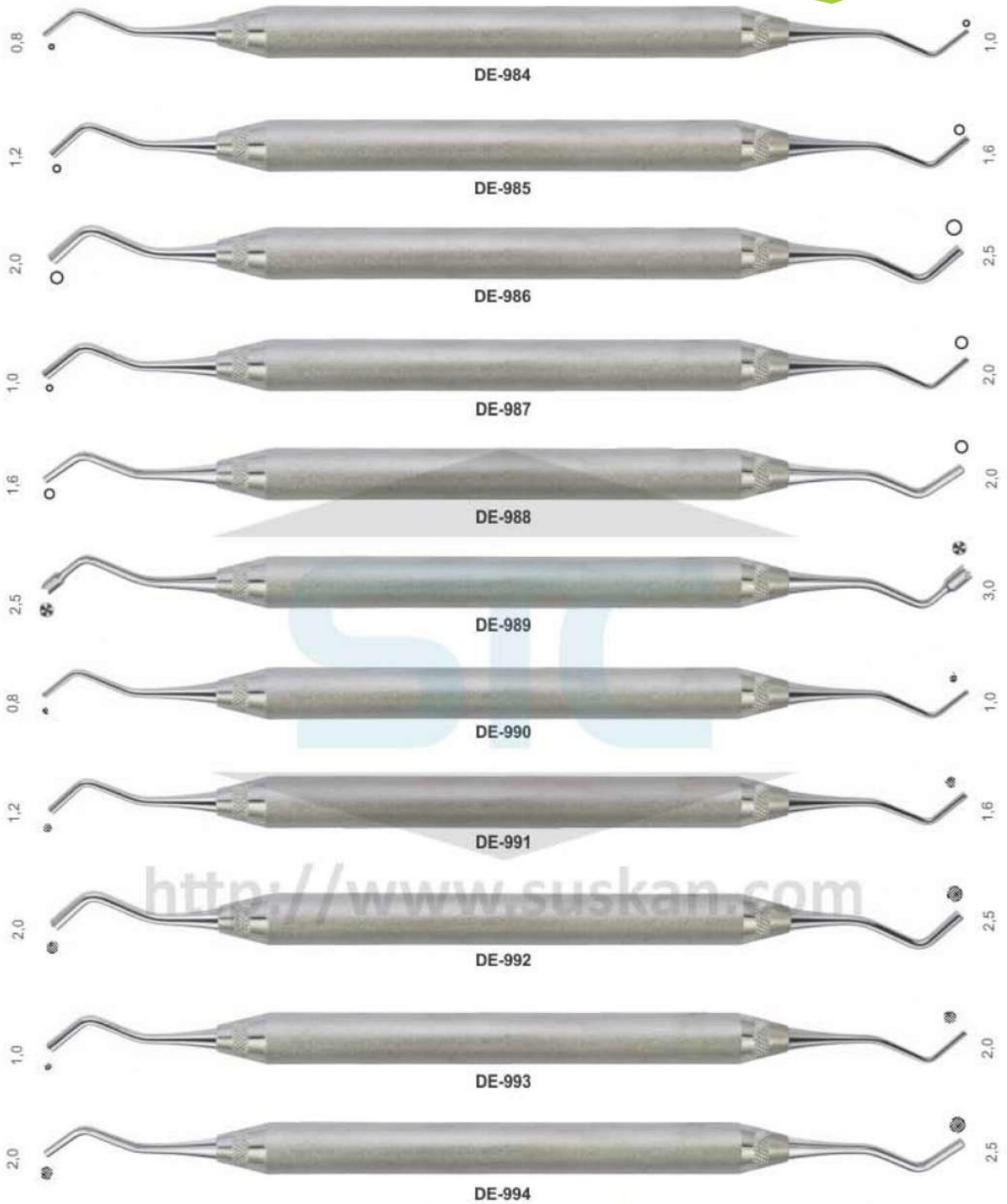


<http://www.suskan.com>

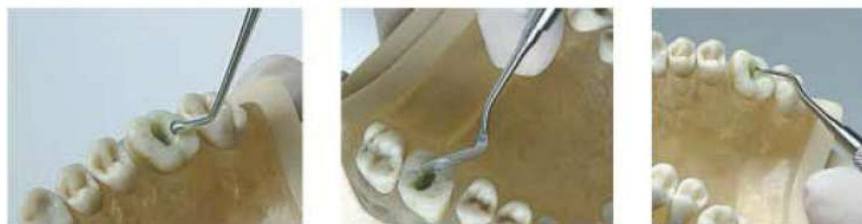
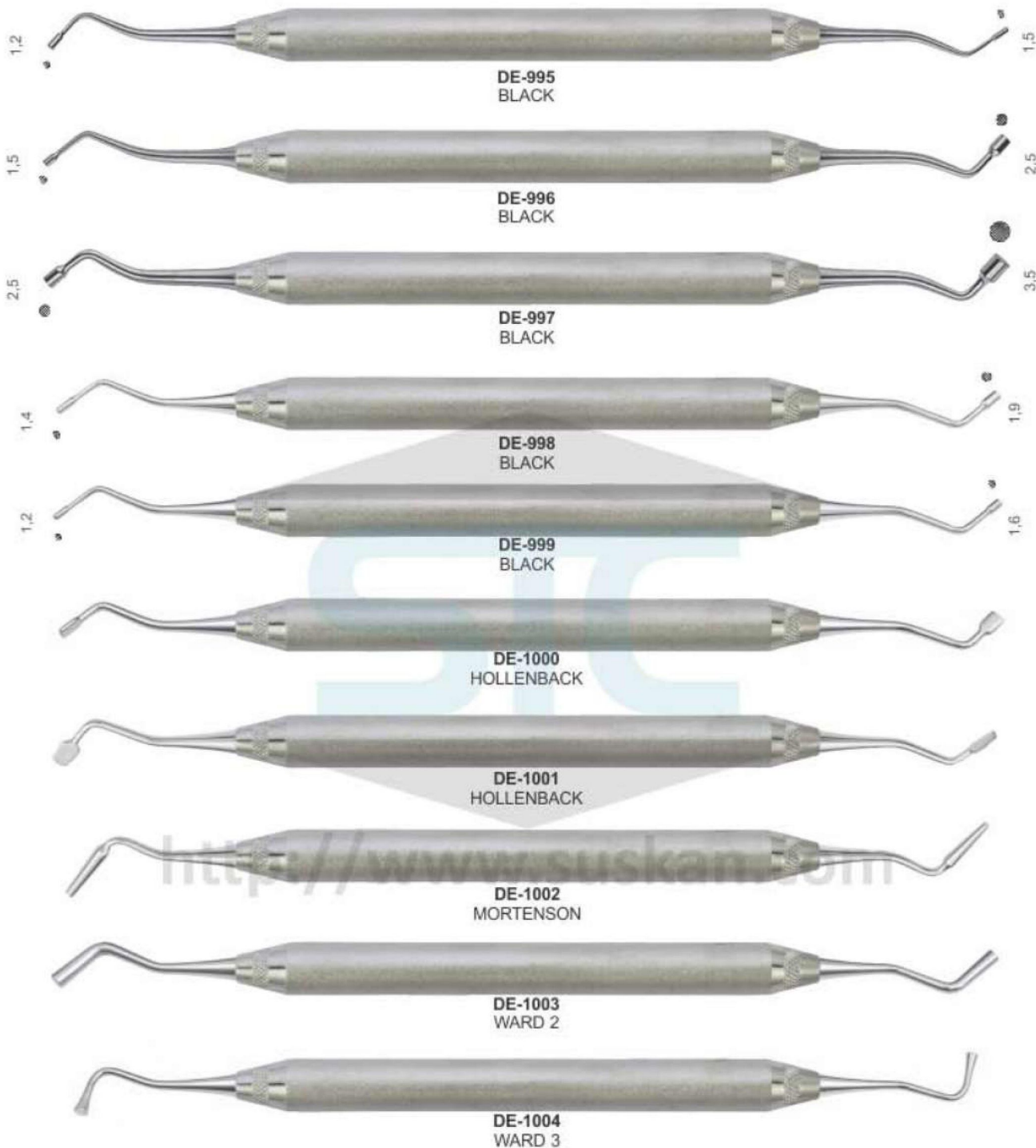
FILLING INSTRUMENTS CONSERVATIVE TREATMENT



FILLING INSTRUMENTS CONSERVATIVE TREATMENT



FILLING INSTRUMENTS CONSERVATIVE TREATMENT



FILLING INSTRUMENTS CONSERVATIVE TREATMENT



DE-1005
WILLIAMS



DE-1006
WILLIAMS



DE-1007
WILLIAMS



DE-1008



DE-1009



DE-1010

<http://www.suskan.com>



DE-1011



DE-1012

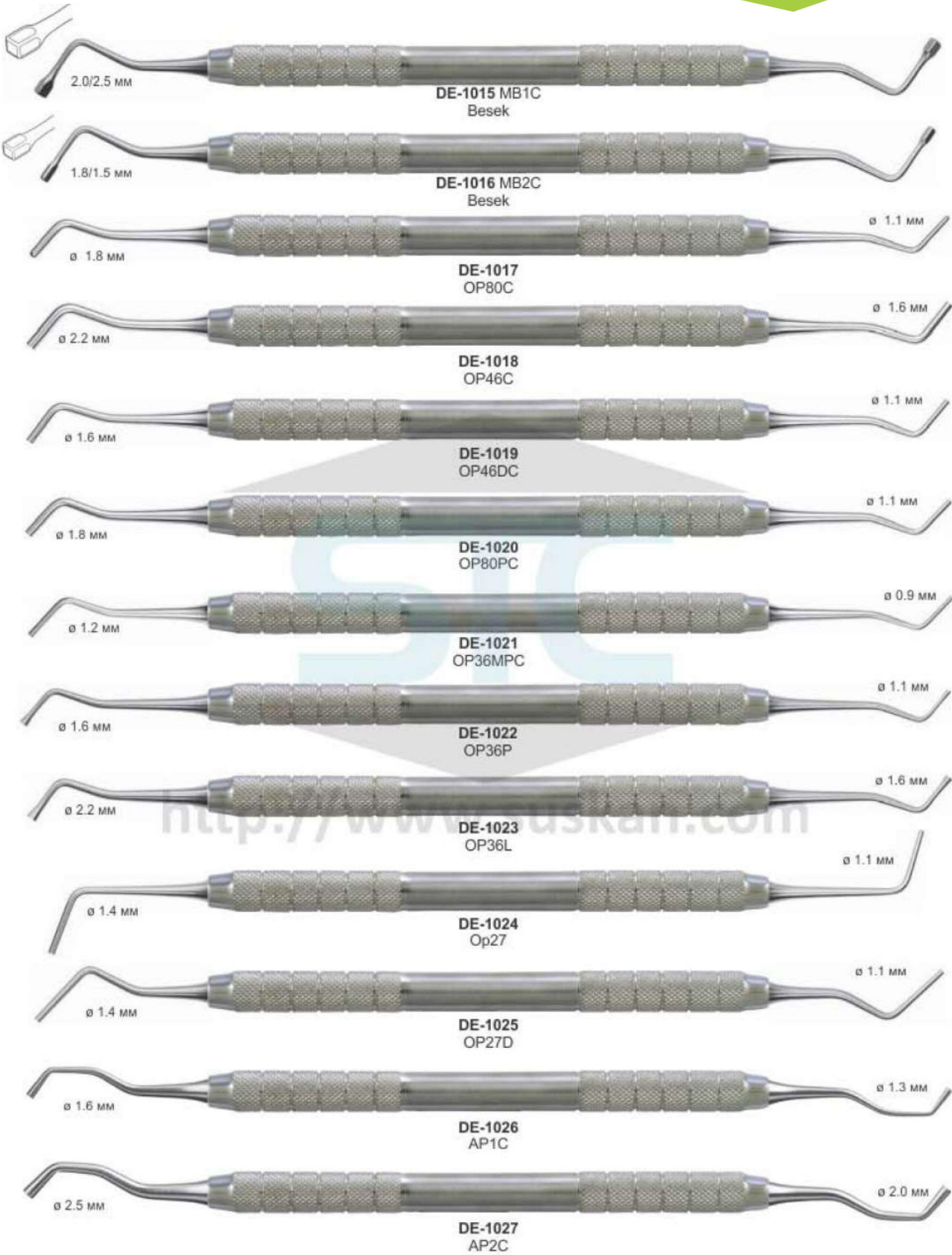


DE-1013



DE-1014

COMPOSITE PLUGGERS INSTRUMENTS



COMPOSITE PLUGGERS INSTRUMENTS



<http://www.suskan.com>



FILLING INSTRUMENTS CONSERVATIVE TREATMENT

Serrated Pluggers



ø 0.9 MM		DE-1034 OP36M	ø 1.2 MM
ø 1.1 MM		DE-1035 OP36D	ø 1.8 MM
ø 1.5 MM		DE-1036 Op36	ø 2.2 MM
ø 1.0 MM		DE-1037 Op52	ø 1.7 MM
ø 2.2 MM		DE-1038 Zi51	ø 2.6 MM
ø 1.8 MM		DE-1039 Op44	ø 2.2 MM
ø 1.7 MM		DE-1040 1BR2	ø 2.6 MM
ø 2.5 MM		DE-1041 2BR3	ø 3.6 MM



COMPOSITE MODELLING INSTRUMENTS



DE-1042 MF2C
Fuzzi



DE-1043
Pj4



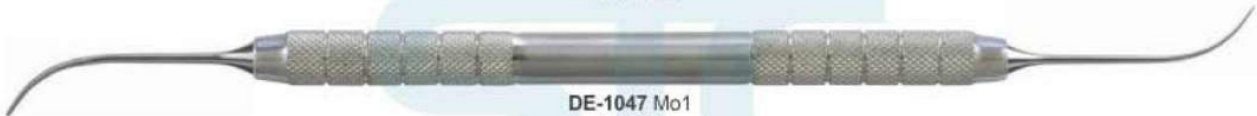
DE-1044 MB3C
Besek



DE-1045
HZ3C



DE-1046
CPRO3C



DE-1047 Mo1
Monari



DE-1048 TH28C
Hirt



DE-1049
HZ25C



DE-1050
Ck10



DE-1051
CK28BC



DE-1052 Op37
Carver



DE-1053

EXCAVATORS

Round excavators

- Cariology**
 - for the removal of softened, carious dentin
 - for the removal of temporary fillings
- Surgery**
 - to sever the periodontal ligament prior to extraction
 - for the removal of granulation tissue after extraction
- Design:** Round working end Curved cutting edge



Round Excavator, 1.0 mm
DE-1054

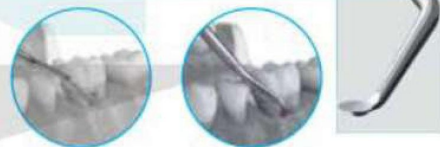


Round Excavator, 1.5 mm
DE-1055



Round Excavator, 2.0 mm
DE-1056

Triple-angled back action excavators



Triple-angled Back Action Excavator, 1.0 mm
DE-1057



Triple-angled Back Action Excavator, 1.5 mm
DE-1058



Triple-angled Back Action Excavator, 2.0 mm
DE-1059



Triple-angled Back Action Excavator, 3.5 mm
DE-1060



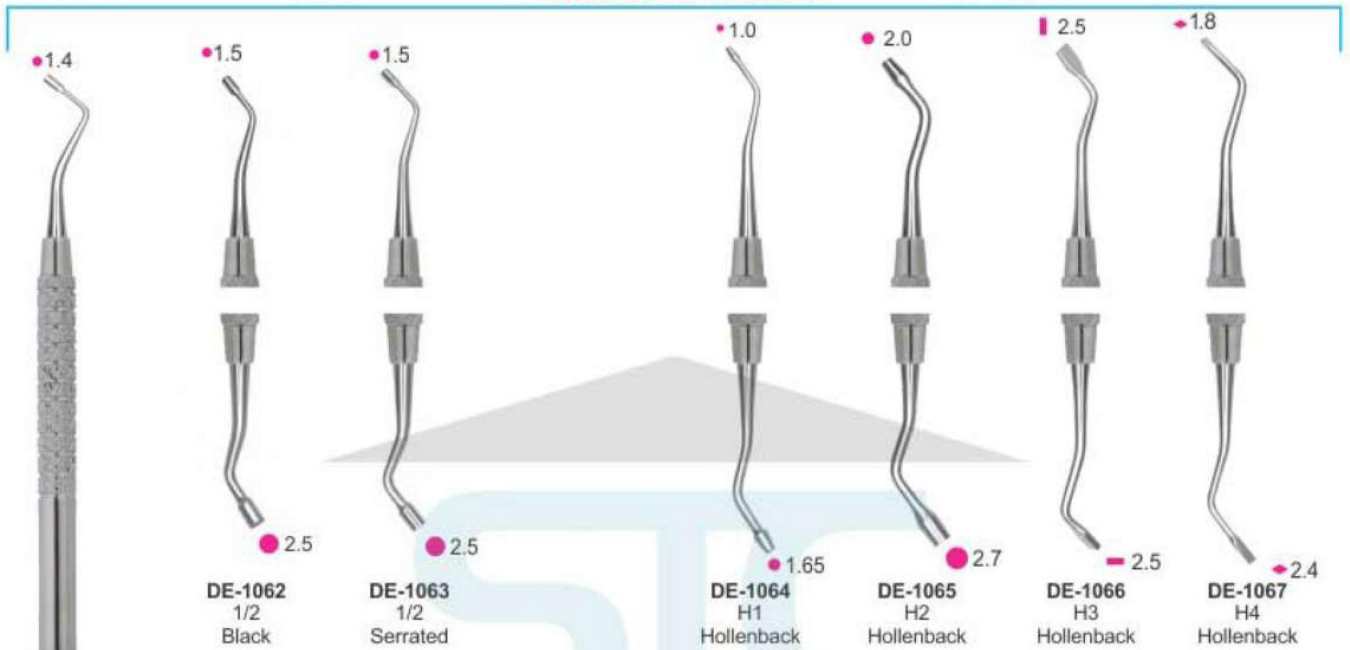
FILLING INSTRUMENTS

COMPOSITE/PLASTIC FILLING INSTRUMENTS SOLID HANDLE 6MM, LENGTH 170MM

BLACK

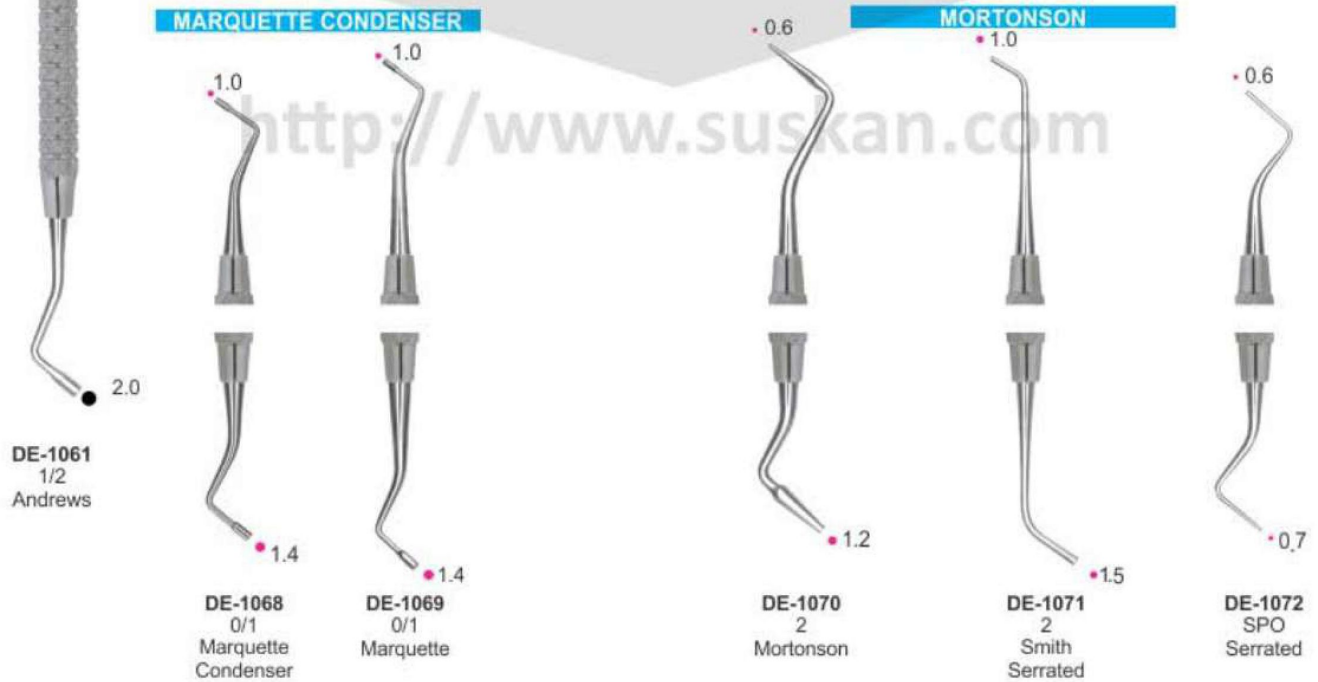
PLUGGERS/CONDENSERS

Hollenback



MARQUETTE CONDENSER

MORTONSON

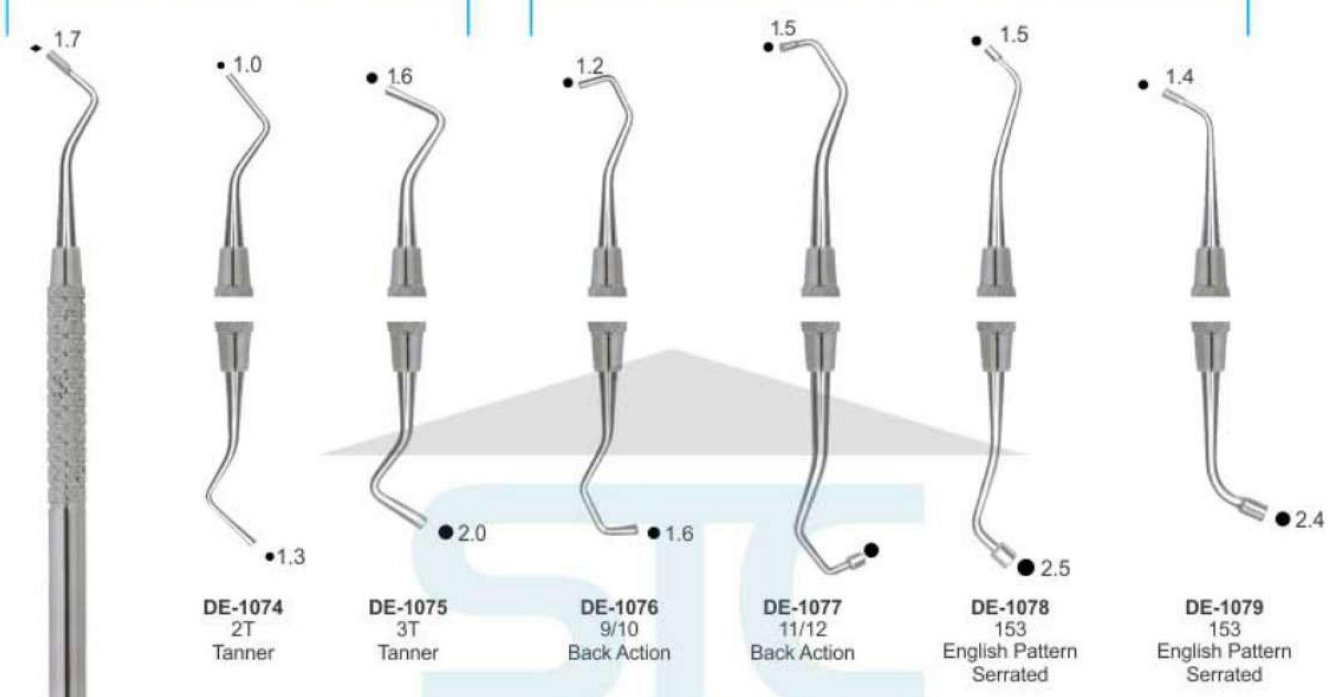


FILLING INSTRUMENTS

RESTORATIVE INSTRUMENTS SOLID HANDLE 6MM, LENGTH 170MM
Back Action Filling Instruments

Tanner Filling Instruments

Back Action Filling Instruments



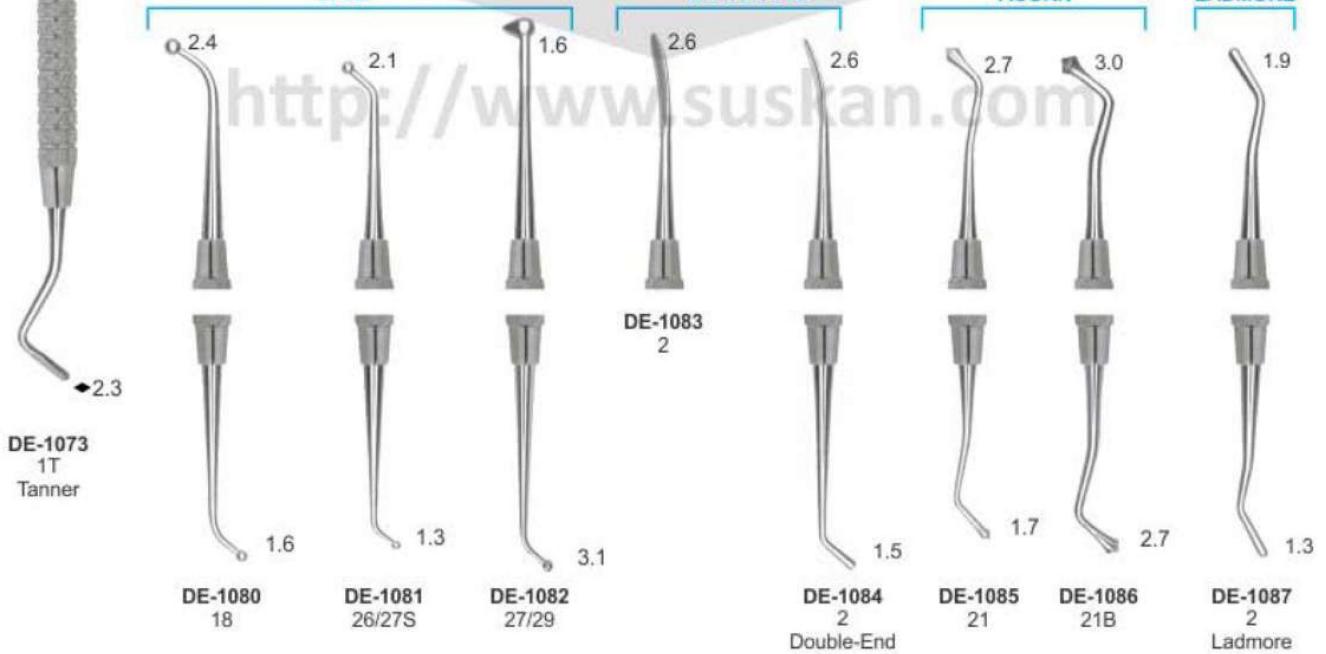
BURNISHERS

BALL

BEAVERTAIL

ACORN

LADMORE



CARVERS INSTRUMENTS

P.K. THOMS WAXING INSTRUMENTS SOLID HANDLE 6mm

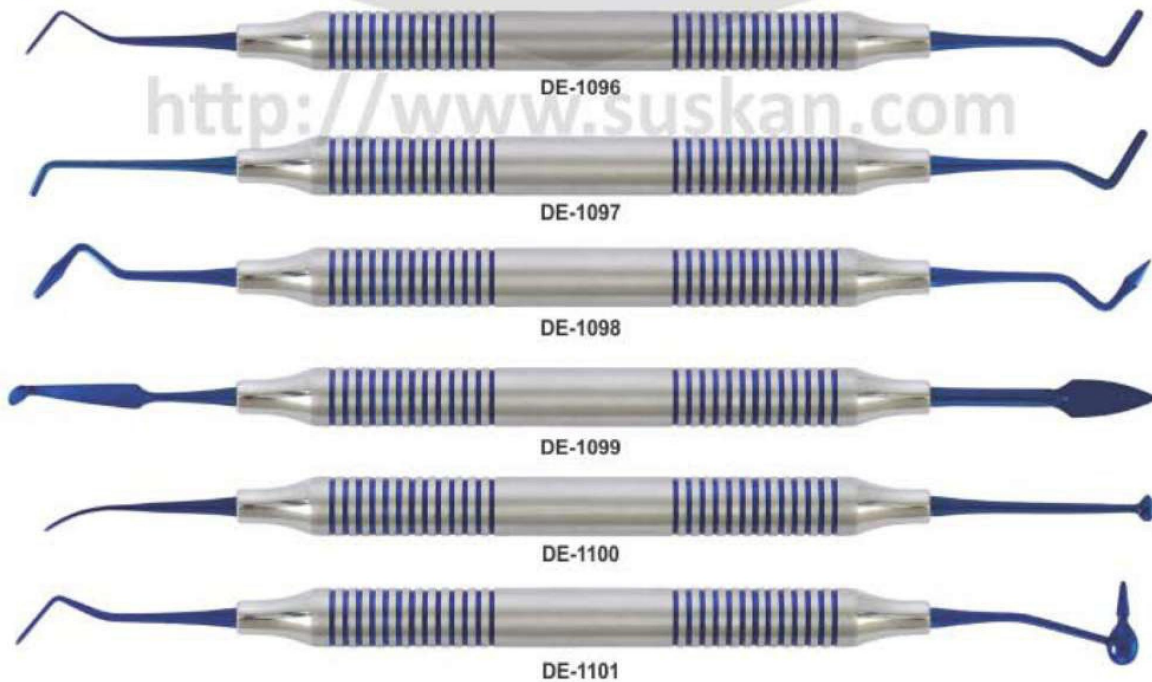


DE-1095
Composite Instruments Blue
Titanium with Cassettes



DE-1094
P.k. Thomas Waxing Instruments Kit

COMPOSITE INSTRUMENTS TITANIUM BLUE ENDODONTIC



<http://www.suskan.com>

CARVERS INSTRUMENTS



DE-1102



DE-1103



DE-1104



DE-1105

<http://www.suskan.com>



DE-1106



Cassette For 5 Instruments
DE-1107

FILLING INSTRUMENTS

FILLING INSTRUMENTS (Gold Pointed) SOLID HANDLE 6MM, LENGTH 170MM



DE-1108 1.5mm / 1.5mm

DE-1109 2.0mm / 2.0mm

DE-1110 2.0mm / 2.0mm

DE-1111 2.5mm / 2.5mm

DE-1112 1.3mm / 0.9mm

DE-1113 1.6mm / 1.3mm

DE-1114 2.4mm / 1.8mm

DE-1115 2.4mm / 2.0mm

DE-1116 1.3mm / 1.5mm

DE-1117 1.8mm / 1.2mm

<http://www.suskan.com>

Filling instrument,
spatula 6 mm solid handle,
length 170 mm,

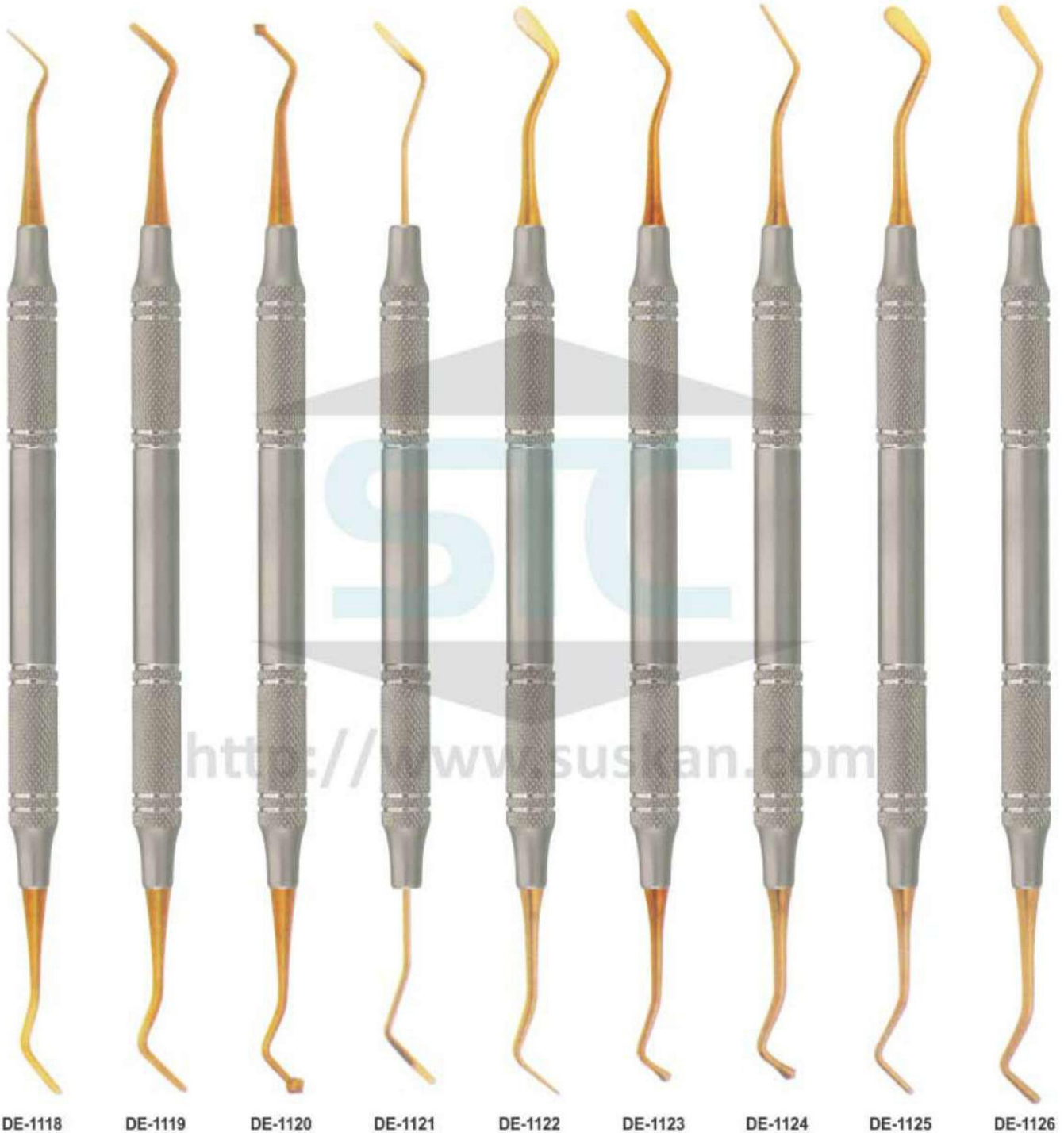
Filling instrument
6 mm
length 175 mm,

Filling instrument,
ball 6 mm
length 170 mm,

Filling instrument,
ball / spatula
6 mm
length 175 mm,

Filling instrument,
plan / plan 6 mm
length 165 mm,

COMPOSITE FILLING INSTRUMENTS



COMPOSITE FILLING INSTRUMENTS

Composite Gold Tip Instruments



DE-1127
Markley 2



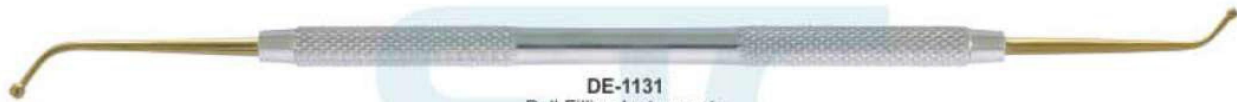
DE-1128
Westcott N.21



DE-1129
NYU/B2



DE-1130
Filling instruments



DE-1131
Ball Filling Instruments



DE-1132
Filling Instruments



DE-1133
Filling Instruments



DE-1134
Filling Instruments



DE-1135
Plastic Filling Instruments



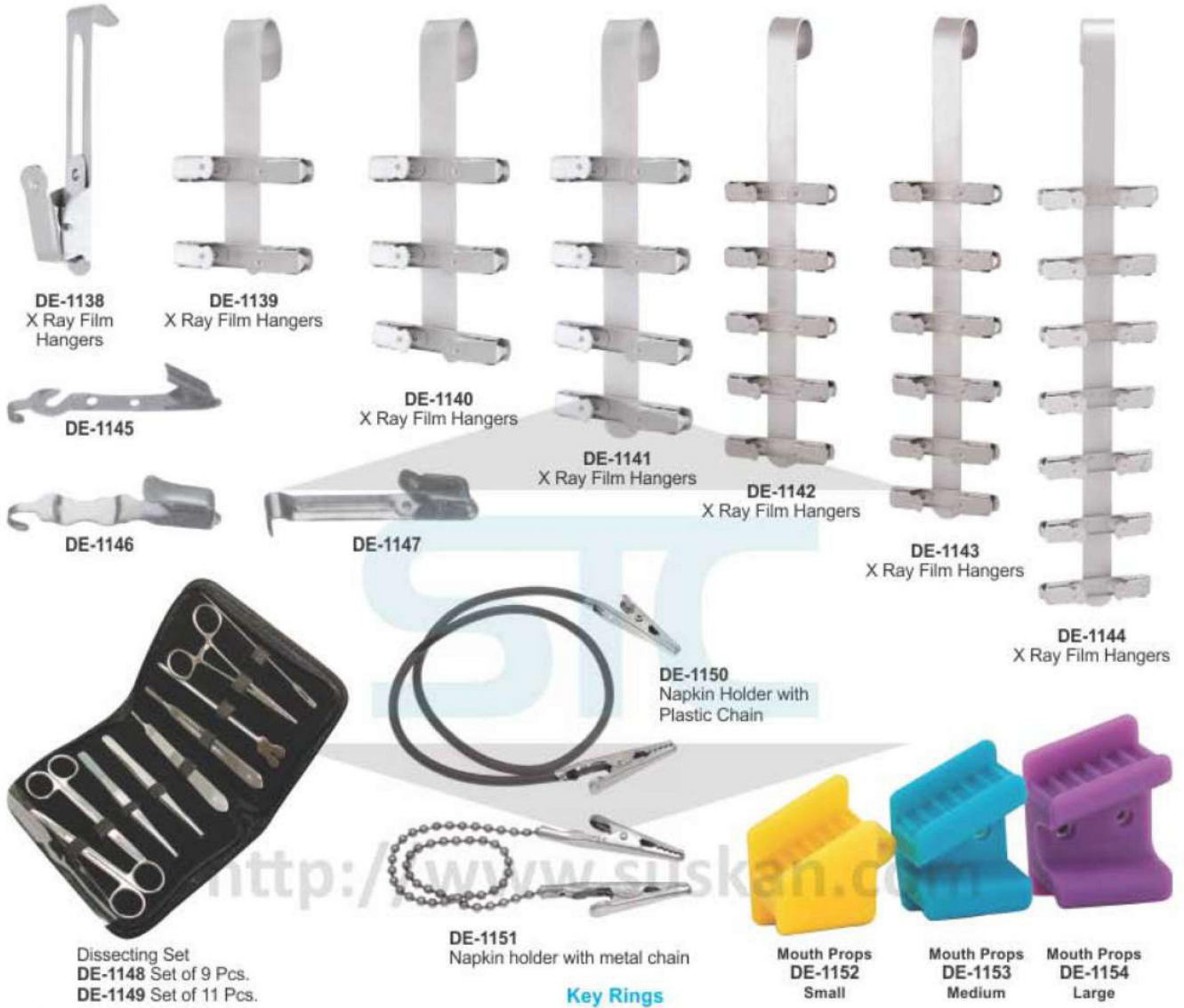
DE-1136
Heidemann



DE-1137
Plastic Filling Instruments

<http://www.suskan.com>

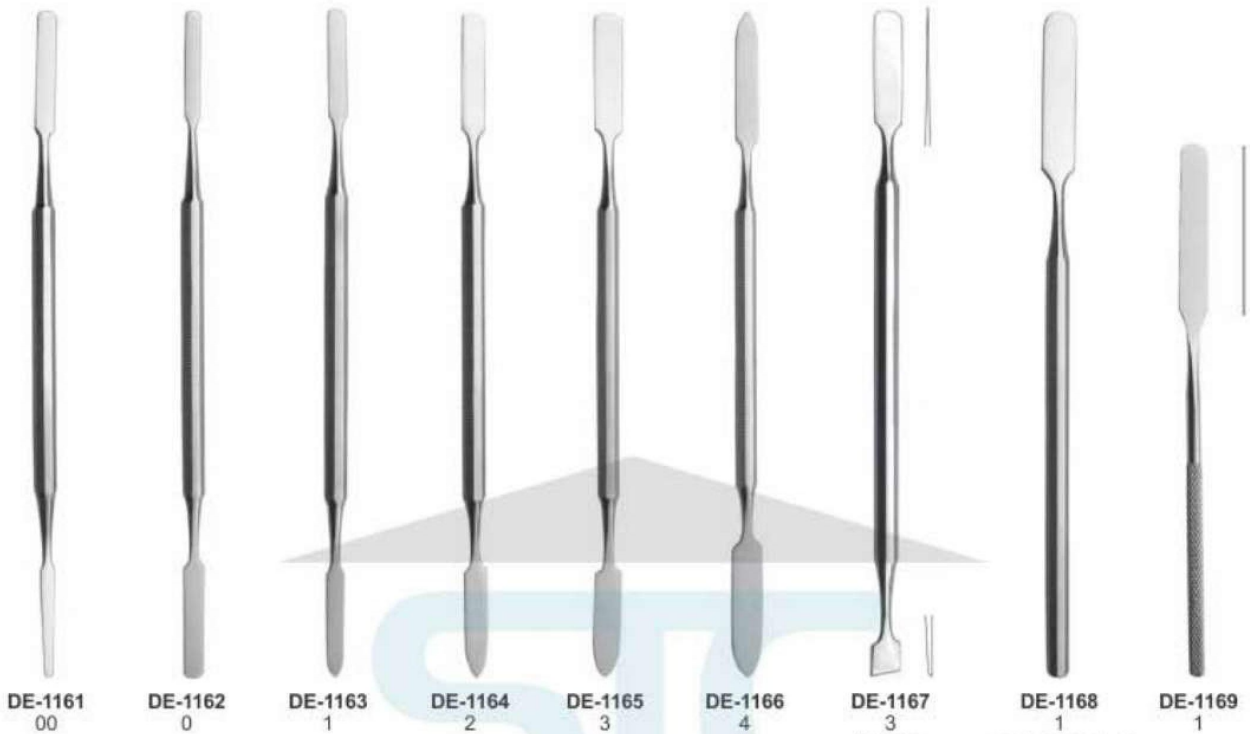
MISCELLANEOUS PRODUCTS



Key Rings



CEMENT SPATULAS



<http://www.suskan.com>



WAX KNIVES

ALGINATE, PLASTER SPATULAS, WAX KNIVES PLASTER FOR KNIVES & PLASTER SHEAR



DE-1183
Wooden Handle
Fig. 5
21.5 cm



DE-1184
Wooden Handle
Fig. 7
19.5 cm curved



DE-1185
Wooden Handle
Fig. 8
20 cm curved



DE-1186
Wooden Handle
Fig. 9
22.5 cm curved



DE-1187
Hook Knives



DE-1188
Fig. 1
Lessmann
12.5 cm



DE-1189
Fig. 2
Lessmann
17 cm



DE-1190
Fig. 1
with small spoon
12.5 cm



DE-1191
Fig. 2
with large spoon
17 cm



DE-1192
Bacolite Handle
Wax Knives,
Small



DE-1193
Bacolite Handle
Wax Knives,
Large



DE-1194
Wooden Handle
Wax Knives,
Small



DE-1195
Wooden Handle
Wax Knives,
Large



DE-1196
Plaster Knife



DE-1197
Fig. 1
17 cm



DE-1198
Fig. 3
16 cm



DE-1199
Fig. 4
16 cm



DE-1200
Special Inox
19.5 cm

ARTICULATORS



DE-1201

Technical Datas:

Intercondylar distance	120 mm.
condylar inclination	fixed at 30°
Bennet angle	fixed at 7°
Incisal table inclination	10°
Distance between mounting plates	85 mm.
Weight	400 gr.
Opening (item 5000)	125°
Opening (item 5010)	180°



DE-1202

Technical Datas:

Intercondylar distance	110 mm.
condylar inclination	fixed at 30°
Bennet angle	fixed at 7°
Incisal table inclination	flat
Distance between mounting plates	85 mm.
Weight	450 gr.
Opening	180°



DE-1203

Stainless Steel Finishing

DE-1204
Royal Blue



DE-1205



DE-1206



DE-1207



DE-1208



DE-1209



DE-1210



DE-1211



DE-1212

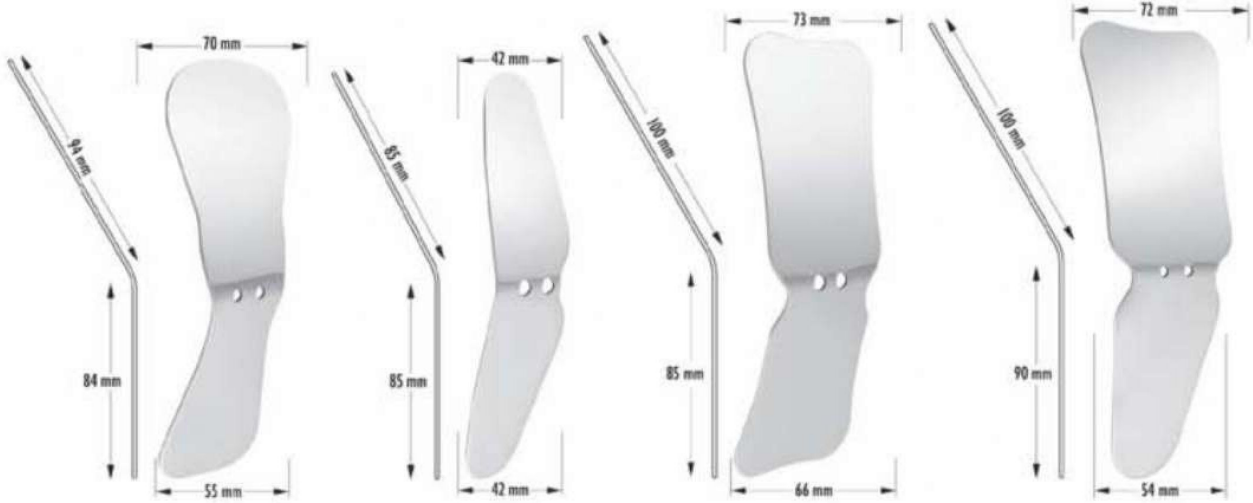


DE-1213



DE-1214
Nakawalni
Dental Laboratory
Instrument

DENTAL PHOTOGRAPHIC MIRRORS

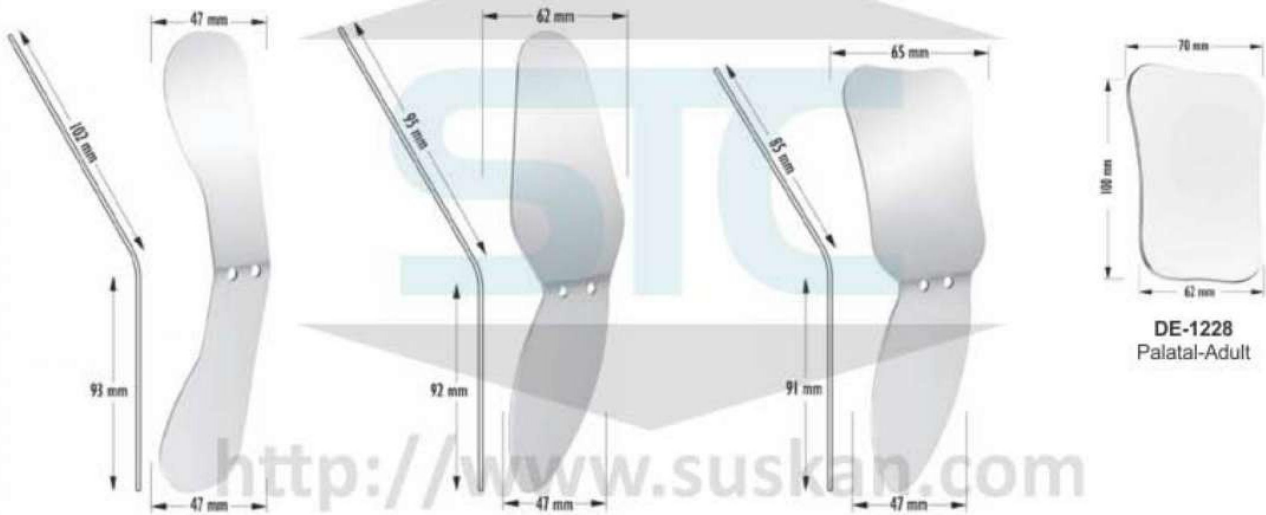


DE-1215 Adult Palatal /
DE-1216 Child Palatal

DE-1217
Buccal

DE-1218 Adult Palatal /
DE-1219 Child Palatal

DE-1220 Adult Palatal /
DE-1221 Adult Buccal

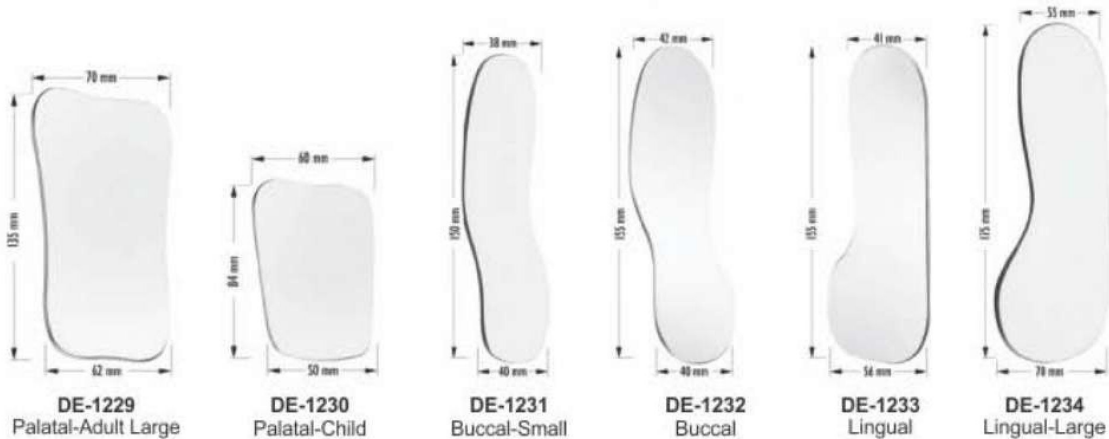


DE-1222 Lingual upper /
DE-1223 Lingual Lower

DE-1224 Adult Buccal /
DE-1225 Child Buccal

DE-1226 Child Palatal /
DE-1227 Child Buccal

DE-1228
Palatal-Adult



DE-1229
Palatal-Adult Large

DE-1230
Palatal-Child

DE-1231
Buccal-Small

DE-1232
Buccal

DE-1233
Lingual

DE-1234
Lingual-Large